

SOURCE:
 © 2013 National Geographic Society;
 1:24,000-scale USGS Topographic Map,
 Quadrangle Brooklyn, NY 1980

2,000 0 2,000
 SCALE IN FEET

AECOM

LOCATION OF WILLIAMSBURG WORKS
 MPG SITE

FIGURE 1

J:\Projects\1176638\GIS\ArcMap\MGP_SiteMap_Dec2017.mxd



LEGEND

- APPROXIMATE SITE BOUNDARY
- APPROXIMATE BOUNDARY OF FORMER MGP PROPERTY

SOURCE:
1. AERIAL PHOTOGRAPH 2011 ESRI WORK IMAGERY AND ITS DATA SUPPLIERS, ACCESSED VIA ARCGISONLINE.COM.
2. SANBORN FIRE INSURANCE MAPS (1887 THROUGH 1996).
3. NEW YORK CITY OPEN ACCESSIBLE SPACE INFORMATION SYSTEM [HTTP://WWW.OASISNYC.NET](http://www.oasisnyc.net) ACCESSED JANUARY 2008.
4. NEW YORK CITY DEPARTMENT OF CITY PLANNING, MAP PLUTO PARCELS

150 0 150
SCALE IN FEET

AECOM

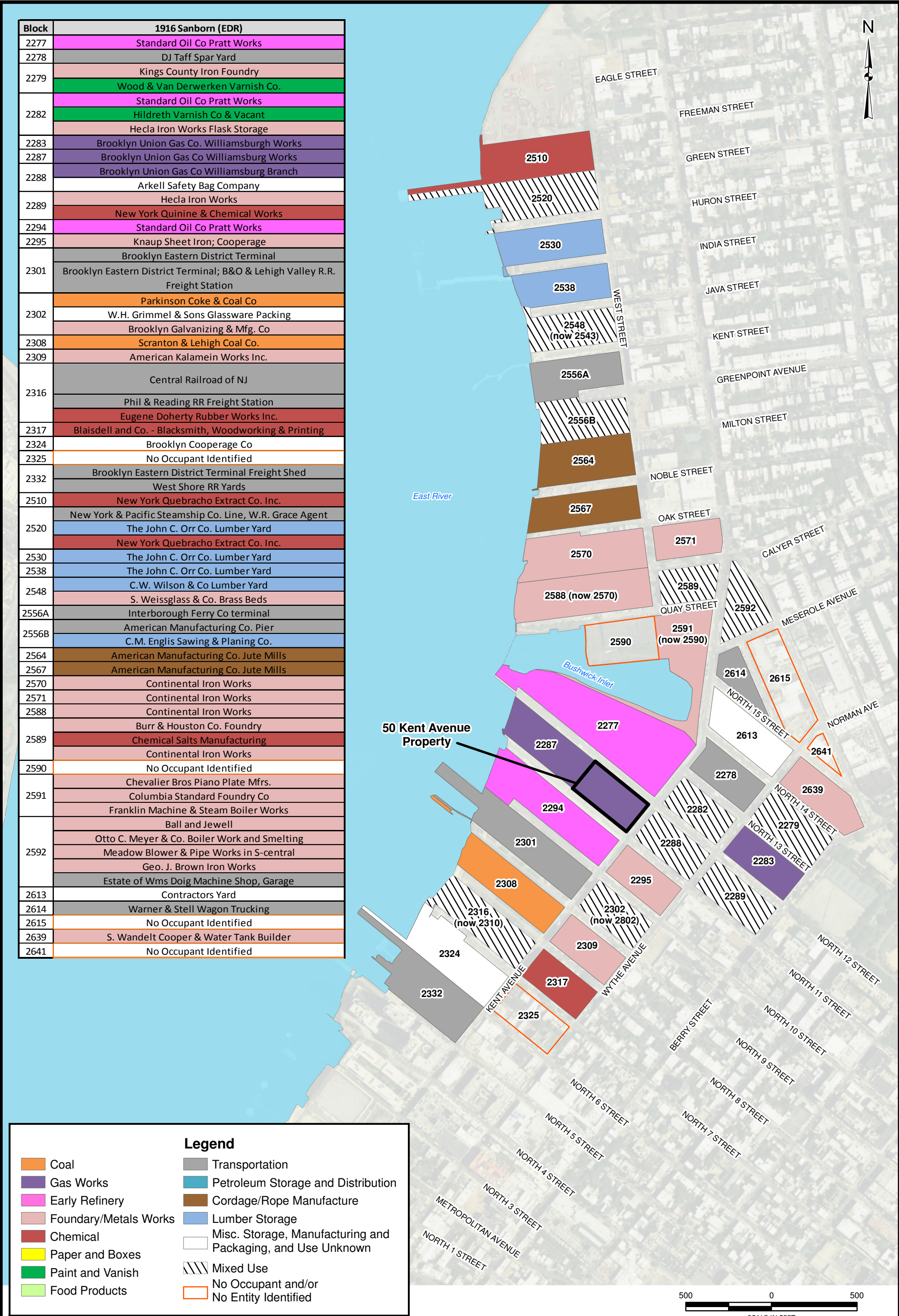
NATIONAL GRID
FORMER WILLIAMSBURG MGP SITE
BROOKLYN, KINGS COUNTY, NEW YORK

**CONSTRUCTION COMPLETION
REPORT**

SITE LOCATION

DATE: DECEMBER 2017

FIGURE 2



Coal

Gas Works

Early Refinery

Foundry/Metals Works

Chemical

Paper and Boxes

Paint and Vanish

Food Products

Transportation

Petroleum Storage and Distribution

Cordage/Rope Manufacture

Lumber Storage

Misc. Storage, Manufacturing and Packaging, and Use Unknown

Mixed Use

No Occupant and/or No Entity Identified

500

0

500

SCALE IN FEET

AECOM

HISTORIC OPERATIONS - 1916

WILLIAMSBURG, BROOKLYN, NEW YORK

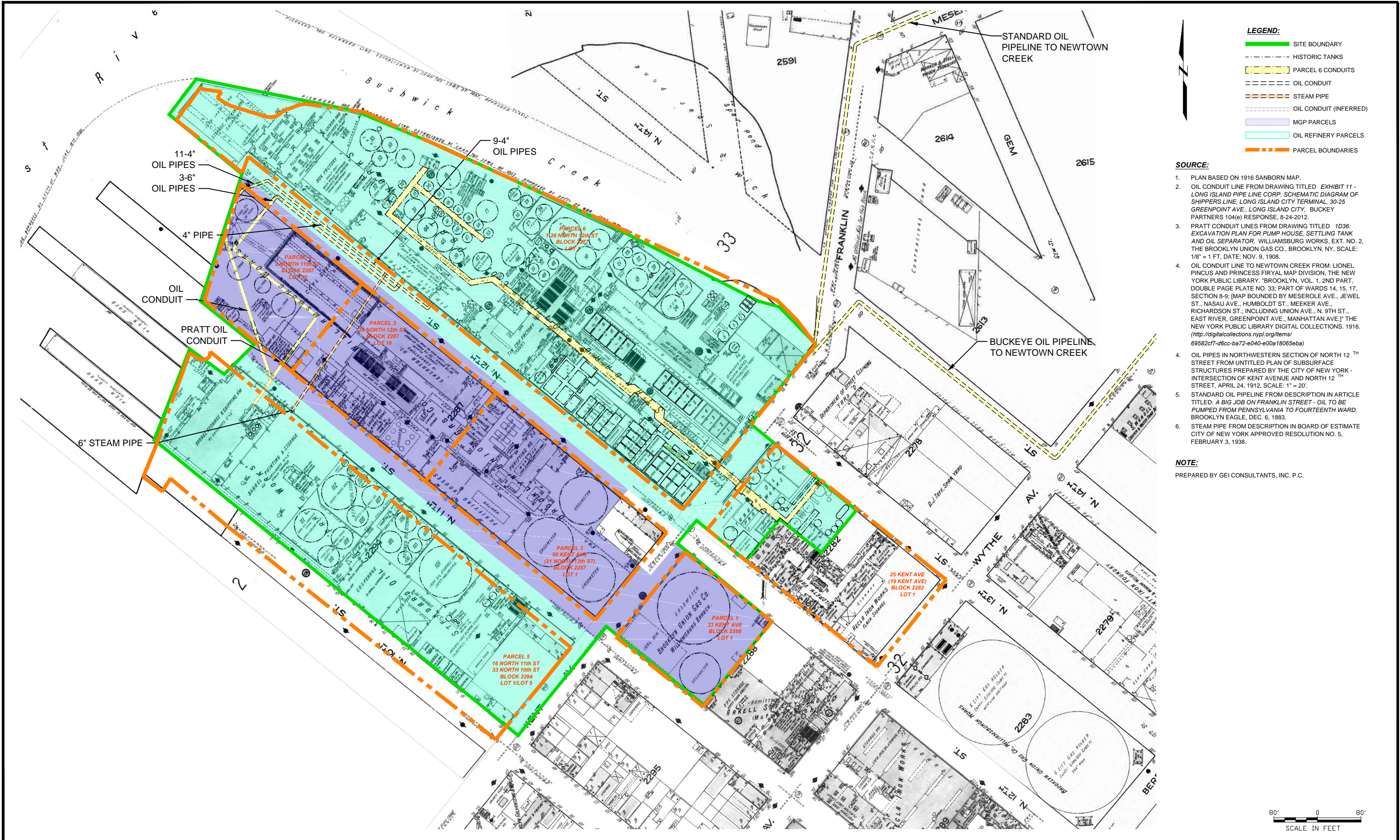
JANUARY 2018

FIGURE 4B





J:\Projects\1176636\CAD\CONSTRUCTION COMPLETION\DECEMBER SUBMITTAL\FIGURE 5.dwg 1/15/18-RAL



AECOM

NATIONAL GRID
FORMER WILLIAMSBURG MGP SITE
BROOKLYN, KINGS COUNTY, NEW YORK

CONSTRUCTION COMPLETION
REPORT

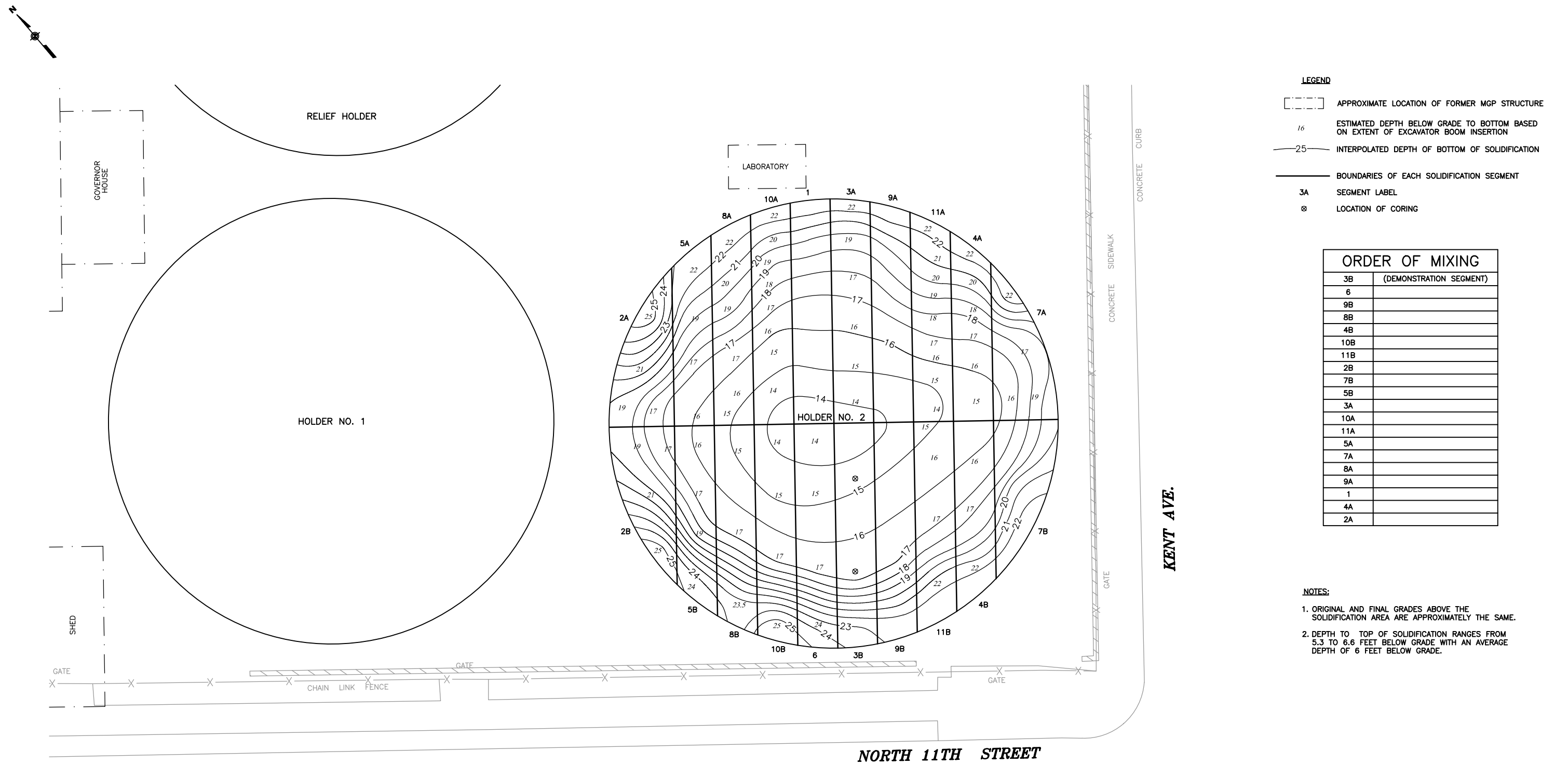
HISTORICAL PIPELINES

DATE: JANUARY 2018

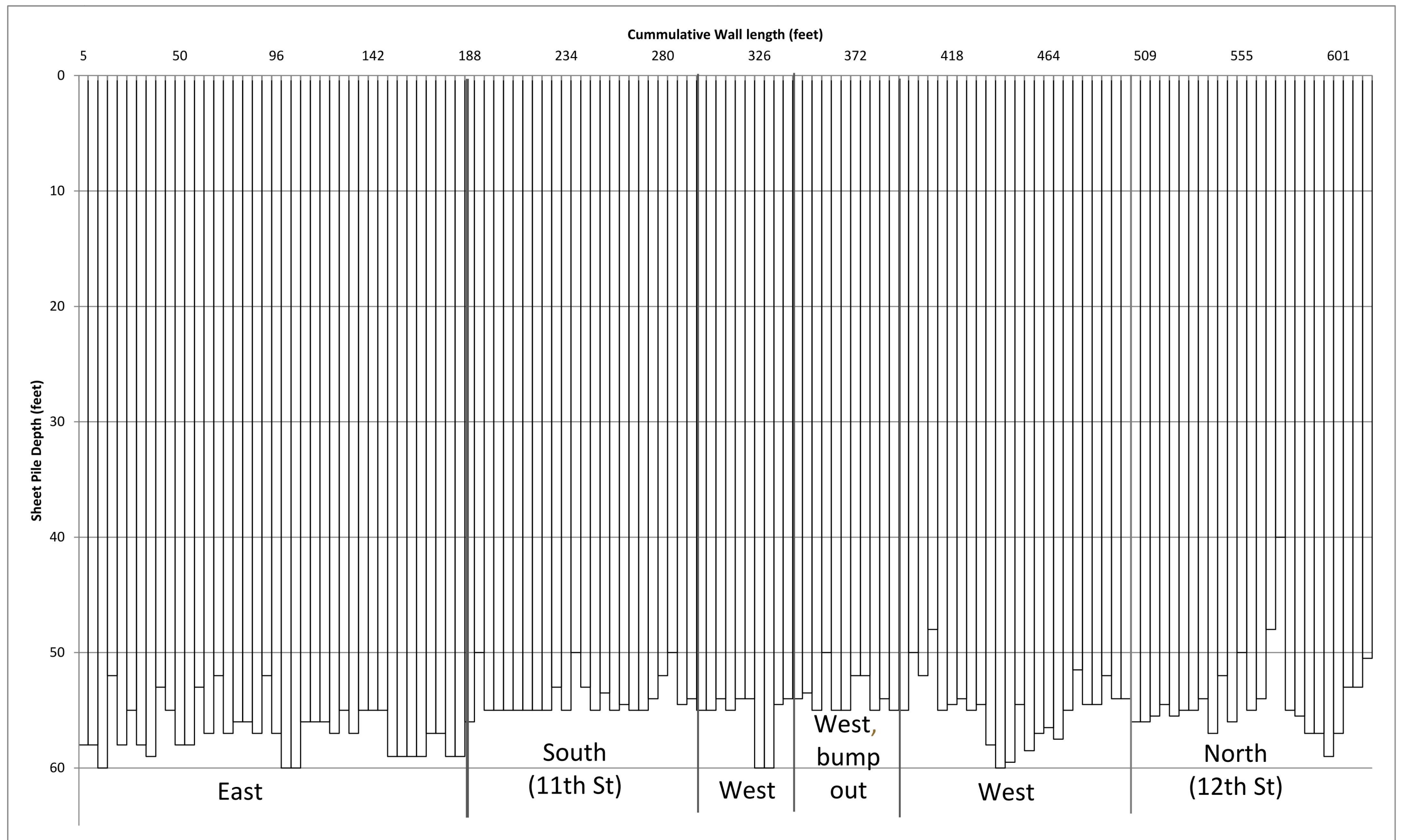
FIGURE 5

J:\Projects\11176638\CAD\CONSTRUCTION COMPLETION\DECEMBER SUBMITTAL\FIGURE 6.dwg 12/5/17-RAL

J:\Projects\11176638\CAD\CONSTRUCTION COMPLETION\DECEMBER SUBMITTAL\FIGURE 7.dwg 12/11/17-RAL



J:\Projects\1176638\CAD\CONSTRUCTION COMPLETION\DECEMBER SUBMITTAL\FIGURE 8.dwg 12/5/17-RAL



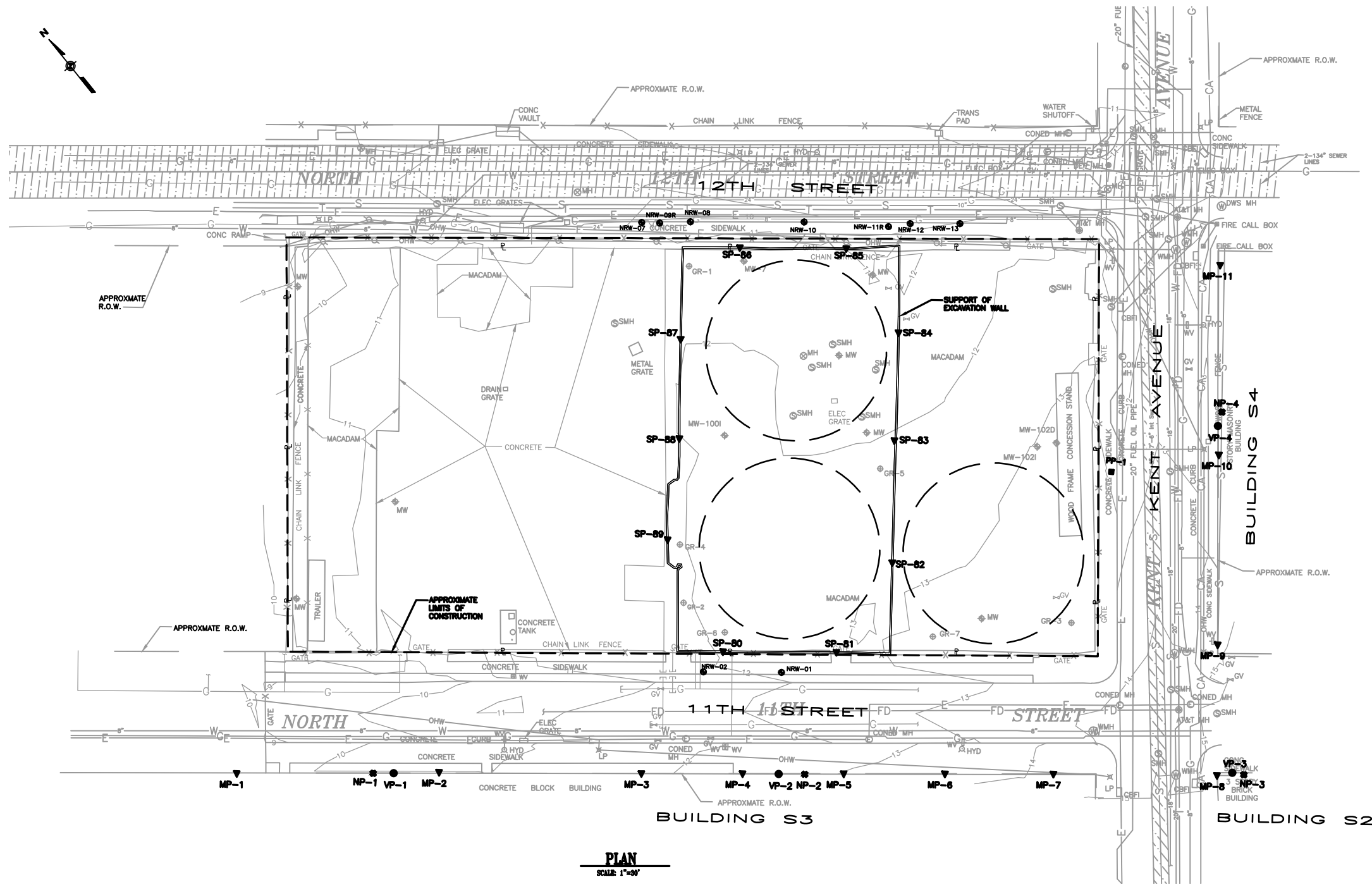
NATIONAL GRID
FORMER WILLIAMSBURG MGP SITE
BROOKLYN, KINGS COUNTY, NEW YORK

CONSTRUCTION COMPLETION
REPORT

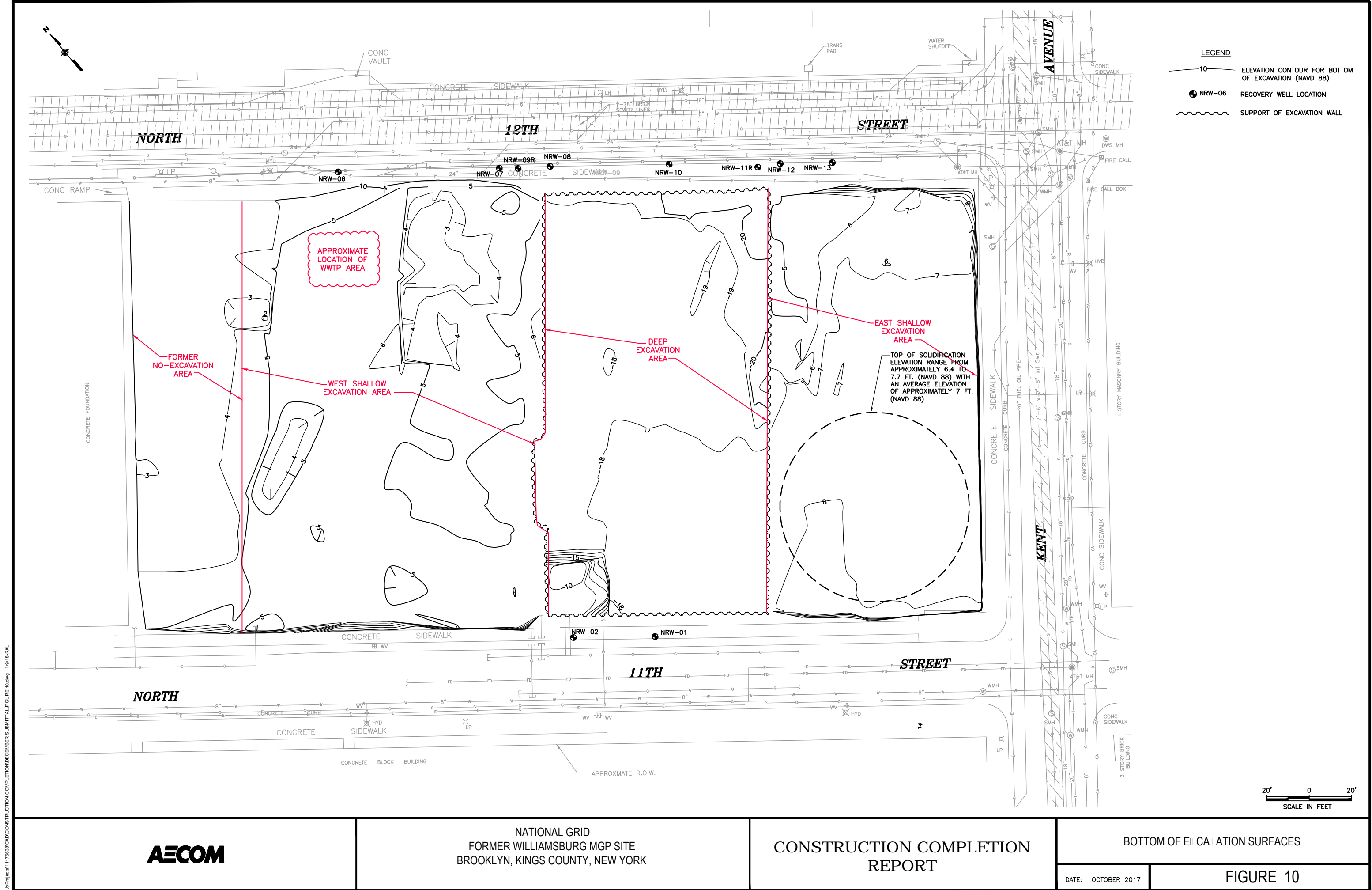
SHEET PILE WALL DEPTH CHART

DATE: JANUARY 2018

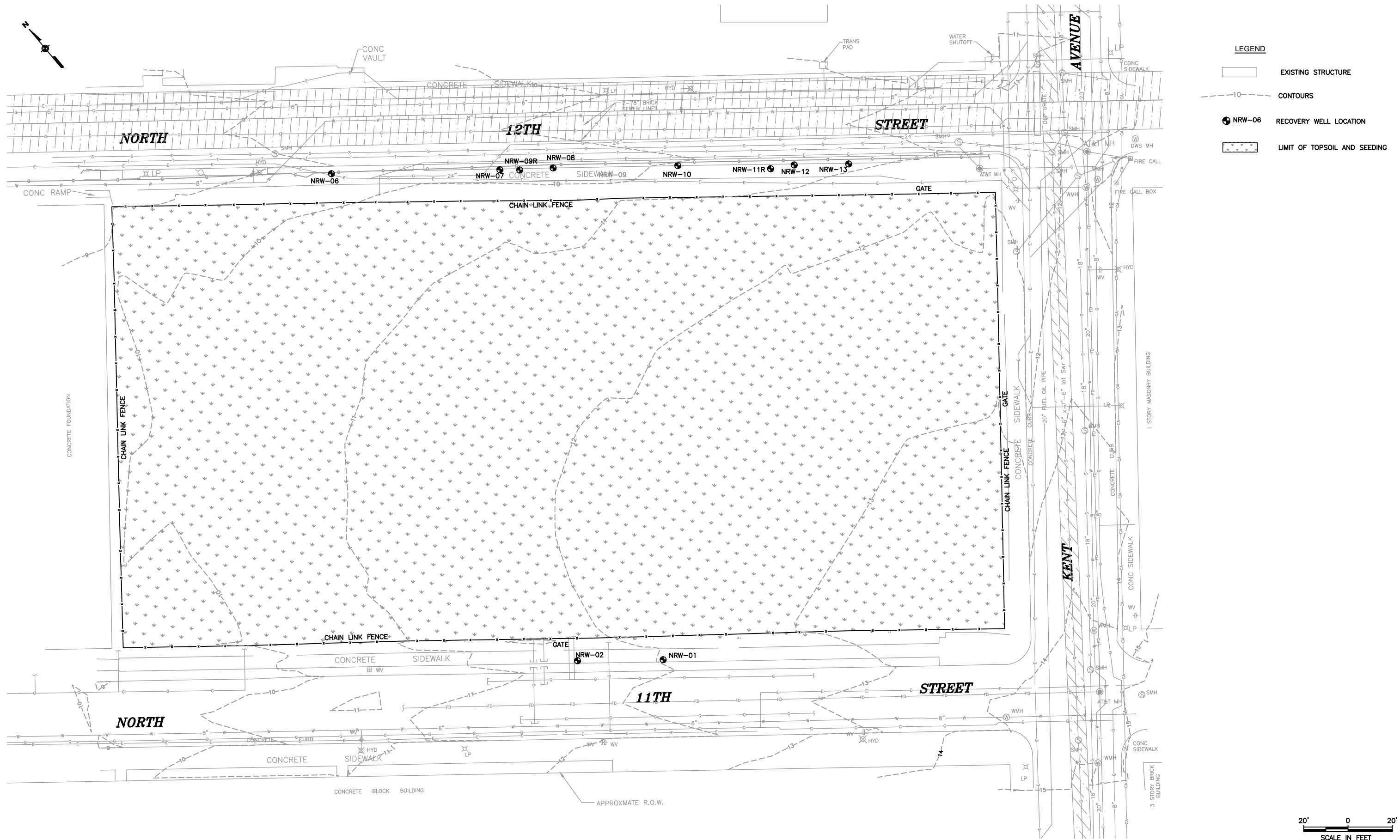
FIGURE 8



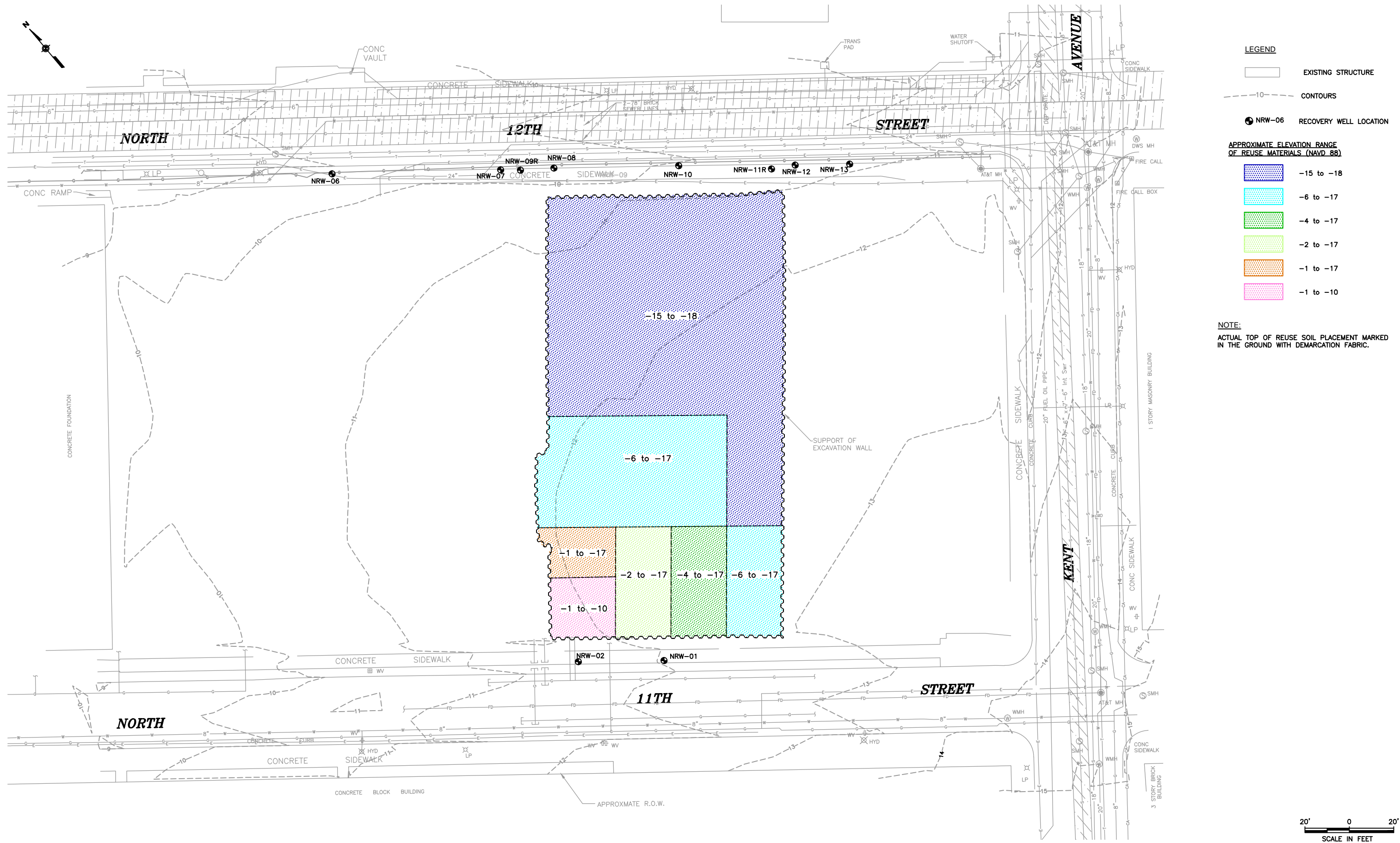
- LEGEND:**
- MP-1** ▼ VERTICAL AND HORIZONTAL OPTICAL SURVEY MARK SET AT FIRST FLOOR AND ROOF ON EXTERIOR WALL
 - SP-1** ▼ VERTICAL AND HORIZONTAL OPTICAL SURVEY MARK SET ON TOP OF THE PROPOSED SUPPORT OF EXCAVATION WALL
 - VP-1** ● VIBRATION MONITORING LOCATION
 - PP-1** ■ PIEZOMETER LOCATION
 - NP-1** ● NOISE MONITOR LOCATION
 - NRW-13** ● RECOVERY WELL LOCATION
 - AMS-1** ■ AIR MONITORING LOCATION (APPROXIMATE; STATION LOCATIONS ADJUSTED DURING CONSTRUCTION TO ACCOMMODATE SITE ACTIVITIES)



J:\Projects\11768\BID\CONSTRUCTION COMPLETION\DECEMBER SUBMITTAL\FIGURE 11.dwg 12/6/17 RAL



J:\Projects\11176638\CAD\CONSTRUCTION COMPLETION\DECEMBER SUBMITTAL\FIGURE 12.dwg 12/1/17-RAL



AECOM

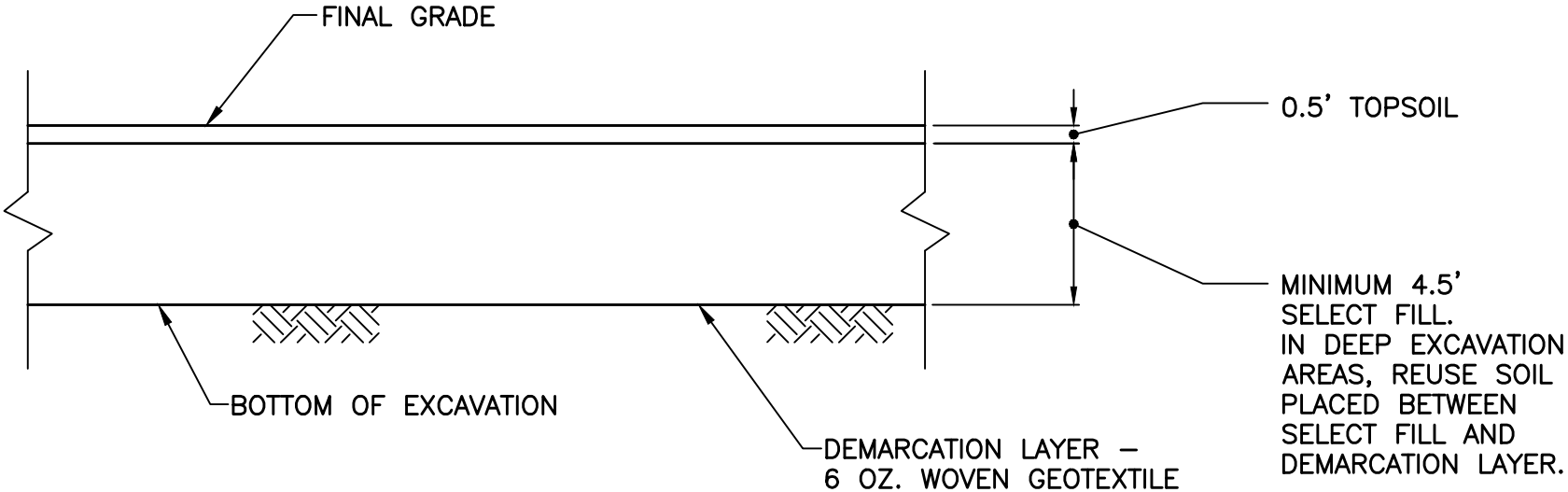
NATIONAL GRID
FORMER WILLIAMSBURG MGP SITE
BROOKLYN, KINGS COUNTY, NEW YORK

CONSTRUCTION COMPLETION
REPORT

REUSE MATERIAL PLACEMENT LOCATIONS AND ELEVATIONS

DATE: JANUARY 2018

FIGURE 12



NOT TO SCALE